

## DURA CLUTCH INSTALLATION

### 15-568 K-DCR RZR 900-AEBS R-SERIES

SVI, LLC 20SEP2023

KIT PART #: 15-568

MODEL: DCR-RZR 900-AEBS

DESCRIPTION: MY16-23 RZR 900 ALL MODELS

#### KIT CONTENTS:

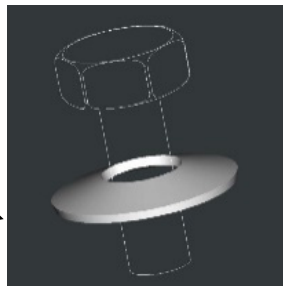
1. 10-276 ASM-DC PRIMARY 33EBS R-SERIES
2. 10-282 ASM-DC SECONDARY 9.5 PREM ROLL
3. 35-063 BELT
4. 75-058 SECONDARY SCREW-M10X1.25X65 8.8 HX ZY
5. 7556130 SECONDARY WASHER-.406X1.25X.125 BELLE-Y
6. 99-023 LOCTITE 243 0.5ML CAPSULE 1330255
7. 90-060 WASHER-SHIM 0.922X1.015X0.036 (20GA) QTY 2
8. 30-091 TOOL-BELT INSTALL
9. 97-066 DECALS - CLUTCH HOUSING AND DASH 35-063
10. 98-066 DURA CLUTCH WARRANTY
11. 98-100 INSTALLATION INSTRUCTIONS DC 15-568 (THESE INSTRUCTIONS)

To watch a R-Series installation video go to [www.duraclutch.com](http://www.duraclutch.com) or checkout our YouTube channel <https://www.youtube.com/user/SpecialtyVehiclesInt>

#### DURA CLUTCH INSTALLATION

1. Remove clutch cover then the stock secondary clutch. If there is a snap ring on the transmission shaft behind the secondary, remove it.
2. Install DURA CLUTCH Secondary. Use the Secondary bolt and Belleville washer supplied with this kit. Do not use O.E. (Original Equipment) hardware. Place a drop of BLUE Loctite provided with kit on the secondary bolt. Tighten the Secondary bolt to 45 ft-lbs.

How Belleville washer is installed on secondary bolt



3. Remove Primary clutch bolt and hardware. Remove the Primary clutch with puller SVI 25-126. Greasing the end of the puller slightly will aid in removal. Do not get grease on any clutch components.
4. Clean the engine tapered shaft and Primary clutch bore with alcohol or degreaser. Do not lubricate.

- Slip the belt into the Secondary so you can read the part number on the belt and using Belt Install Tool open secondary so belt will seat down into clutch. Sometimes a screwdriver is needed to assist lowering into clutch.



- Slide belt into primary clutch, then install on post. Use primary hardware removed in step 3.

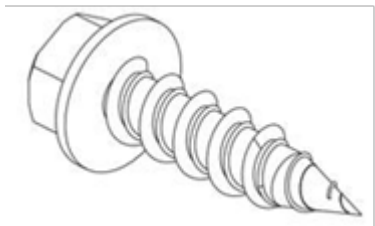


- Tighten stock primary bolt to **60 ft-lbs. VERY IMPORTANT- Over tightening will not allow clutch to operate properly and cause damage and failure of the clutch.** A 3/8 socket extension can be used to hold primary into one of the outer fins, make sure the extension is seated flat and up against clutch.
- Set belt tension. Place transmission in Park and make sure machine is turned off. Rotate secondary by hand to seat belt in secondary clutch until belt tension is tight.
- Once belt tension is set, start machine and verify that the secondary clutch has slight to no rotation at idle. (If slight rotation this will go away after belt break-in) If slight to no rotation, proceed to step 11. If the secondary is spinning fast, proceed to step 10.

10. If the secondary rotates fast, turn machine off and check to see where the belt is riding in between the primary sheaves. The ideal belt location should be centered with a small gap on each side between the sheaves. Follow steps a. or b. to determine the next action. We have a YouTube video on our Specialty Vehicles International channel called How to: Adjust Alignment-DURACLUTCH R-Series Kit <https://www.youtube.com/@Duraclutch/videos>
- a. If belt is up against fixed sheave (inward), remove belt and secondary screw & secondary and add one shim washer included in kit onto shaft. Install secondary, secondary screw and belt, start machine to reset alignment. If the secondary still rotates fast and rides against fixed sheave, add another shim washer. Repeat until there is slight to no rotation, remember to blue Loctite secondary screw when alignment is complete and torque to spec, proceed to step 11.
  - b. If belt is up against moveable sheave (outward), remove belt, secondary screw & secondary and remove one shim washer. Install secondary, secondary screw and belt, start machine to reset alignment. If the secondary still rotates fast and rides against the movable sheave, remove another shim washer. Repeat until there is slight to no rotation, remember to blue Loctite secondary screw when alignment is complete and torque to spec, proceed to step 11.
11. Install outer clutch housing.

Note: The clutch cover screws are hi-lo screws designed for plastic. They can be used over and over in the same hole but must not be over-torqued.

Torque spec: 4 ft-lbs/48 in-lbs. This is like a screwdriver torque. Use a hand wrench or a clutch screw gun at a very low setting.



Ensure seal is good or replace with SVI PN 35-045. To ensure the primary does not rub against the cover push up and back on the housing while lightly snugging the bottom screws. Then tighten the top rear screw followed by the other top screws. Then tighten all remaining screws including the bottom screws evenly. After starting the engine if you hear the primary rubbing, push on the cover while the engine is running in different directions to see which way will eliminate the rubbing. Stop the engine and loosen the housing screws and retighten using the above sequence while pushing on the cover in the direction that eliminated the rubbing. If this does not eliminate the rubbing, try installing a new 35-045 gasket and go through the bolt tightening sequence again. If you cannot eliminate the rubbing the cover is heat warped and you may have to install a new cover and perhaps a new back plate. You may also try using a heat gun to remove heat sag in the cover.

12. Drive vehicle for 5 miles to break-in DURACLUTCH kit components.

NOTE: If the transmission shifts hard after break-in there are likely issues other than drag in the clutches. See your dealer or call DURACLUTCH service (218-967-8205).

#### DECALS

13. Apply two decals as shown – one on the clutch housing and one in the dash area. Clean surface with alcohol or similar non-harsh solvent. Decal application is important to alert service technicians that the standard Polaris clutches have been replaced and a different belt is used.

